

fischer Zykon-Panel Anchor FZP-II Carbon



Product description

Undercut anchor for natural stone from 2 cm panel thickness.
Application with reveal angle or other attachment parts.

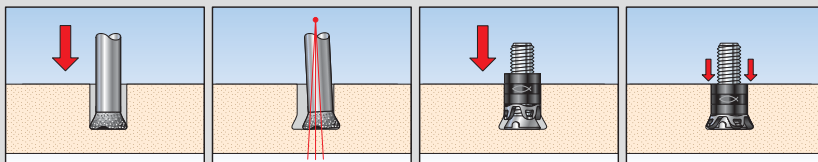
Advantages / benefits

- Stress-free fixing in natural stone
- Anchoring not visible from front of facade
- Static optimised position of anchor
- Higher collapse loads than traditional systems
- Economic and easy installation of reveal
- Installation regardless of weather

Installation

Special drilling machines from fischer, are necessary for the drilling of the undercut hole. The anchor will be installed by a special fischer setting tool.

Drilling / anchor setting



Application example

- **Anchor in panel**
FZP-II Carbon in granite



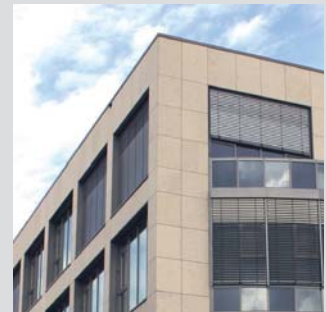
- **Reveal**
Facade panel with FZP-II Carbon and reveal angle assembled



Approval



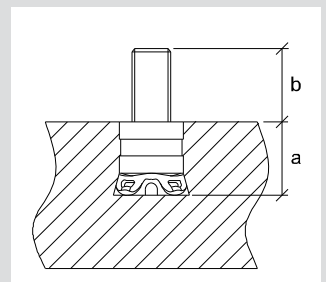
- **Natural stone facade**
with FZP-II Carbon and reveal angle



Technical data

| Type | Item | Installed anchor length mm a | Drill hole-Ø mm | Anchorage depth mm | Thread diameter | Bolt projection length mm b | Box quantity pieces |
|-----------------------------|----------------|-------------------------------------|-----------------|--------------------|-----------------|------------------------------------|---------------------|
| FZP-II 11x12 M6/13 Carbon * | 511 966 | 12 | 11 | 12 | M6 | 13 | 250 |
| FZP-II 11x12 M6/18 Carbon * | 511 967 | 12 | 11 | 12 | M6 | 18 | 250 |
| FZP-II 11x15 M6/10 Carbon * | 511 968 | 15 | 11 | 15 | M6 | 10 | 250 |
| FZP-II 11x15 M6/18 Carbon * | 511 969 | 15 | 11 | 15 | M6 | 18 | 250 |
| FZP-II 13x15 M8/10 Carbon * | 511 970 | 15 | 13 | 15 | M8 | 10 | 250 |
| FZP-II 13x15 M8/15 Carbon * | 511 971 | 15 | 13 | 15 | M8 | 15 | 250 |
| FZP-II 13x15 M8/23 Carbon * | 511 972 | 15 | 13 | 15 | M8 | 23 | 250 |
| FZP-II 13x15 M8/28 Carbon * | 511 973 | 15 | 13 | 15 | M8 | 28 | 250 |
| FZP-II 13x17 M8/17 Carbon * | 511 980 | 17 | 13 | 17 | M8 | 17 | 250 |
| FZP-II 13x21 M8/9 Carbon * | 511 974 | 21 | 13 | 21 | M8 | 9 | 250 |
| FZP-II 13x21 M8/17 Carbon * | 511 975 | 21 | 13 | 21 | M8 | 17 | 250 |
| FZP-II 13x21 M8/22 Carbon * | 511 976 | 21 | 13 | 21 | M8 | 22 | 250 |

* European Technical Approval ETA-11/0145



ACT Service

fischerwerke GmbH & Co. KG

Werk Altheim · Hindenburgstr. 81 · D-72160 Horb

Phone +49 (0)74 43 12-45 53 · Fax +49 (0)74 43 12-49 07

act@fischer.de · www.fischer.de

fischer 

innovative solutions